

MCU IN REVIEW: A LOOK BACK AT 2025

Official Newsletter for the Midwives College of Utah Community



EST. 1980

MIDWIVES COLLEGE
OF UTAH

M I D W I F I N G M I D W I V E S

PUBLISHED APRIL 2026

CONTENTS

MIDWIVES OF EXCELLENCE

03 PRESIDENT'S MESSAGE
MCU president reflects on the cycle of beginnings and endings in midwifery

04 UPCOMING EVENTS
Learn about college closures over the Fall trimester

05 COLLEGE NEWS
Find out what the various college departments achieved this Summer

10 FACULTY & STAFF
Get the latest updates on changes within our faculty and staff

MIDWIVES OF TECHNICAL EXPERTISE

13 EXPANDING ACCESS
See how our faculty and alumni are working to expand access to midwifery care

MIDWIVES OF PROFESSIONAL EXCELLENCE

16 ADMISSIONS
Learn more about the admission staff and the work they do for prospective students

21 PROFESSIONAL HIGHS
Learn about the professional milestones accomplished by MCU faculty and grads

32 GRADUATES
See and learn about our Fall 2025 term MCU graduates

MIDWIVES OF PERSONAL GREATNESS

42 MOMENTS OF GREATNESS
Take a peak at moments of personal greatness in our community this summer

44 CONTINUING GREATNESS
Help us ensure that EVERYONE has the opportunity to pursue greatness





EST. 1980
**MIDWIVES COLLEGE
OF UTAH**
MIDWIFING MIDWIVES

Dear Students, Faculty, and Staff,

As we begin a new term, I've been reflecting on the many exciting developments since our last newsletter. It's been a season of growth, connection, and progress here at MCU, and I couldn't be prouder of the work that our entire community is doing.

A significant milestone for our institution has been the submission of all required materials for our Midwifery Education Accreditation Council (MEAC) review. The feedback we've received so far has been exemplary, and we're eagerly awaiting final results. My sincere thanks to everyone who contributed to this effort—it represents countless hours of teamwork, dedication, and care for our mission.

This semester marks a transformative chapter for our community, highlighted by Erin Davis joining our senior leadership team as the new Vice President of Student Affairs to champion student retention and success. Between the smooth rollout of our updated tuition structure and the launch of a student-led Peer Mentor program, we are making major strides in fostering connection and confidence across our campus. We invite you to be a part of this momentum by joining the Student Council—reach out to Erin for more details—and be sure to read the rest of this publication to see how these milestones are actively shaping the future of your student experience.

As we reflect on 2025, I'm thrilled to celebrate 30 new graduates—each one stepping into the world to make a profound difference through midwifery. We look forward to seeing even more join their ranks in 2026.

On a personal note, I'm truly settling into my role as president. I've enjoyed connecting more closely with staff across departments and gaining a deeper appreciation for the many ways our administrative team supports student achievement every day. I've also had the pleasure of engaging with a variety of students throughout the program, which continues to feed my passion for the work I do.

Wishing everyone a wonderful Winter term. I'm looking forward to celebrating more of the impactful work of students, staff, and faculty in the months ahead.

Warm regards,
Megan Koontz
President

UPCOMING EVENTS

05.04 - 05.10	Maternal Mental Health Awareness Week
05.05	International Day of the Midwife
05.11	Summer Trimester Begins
05.25	MCU Closed for Memorial Day
06.19	MCU Closed for Juneteenth
07.03	MCU Closed for Independence Day
07.24	MCU Closed for Utah Founder's Day
08.01	World Breastfeeding Week
08.21	Trimester Ends



Midwives of Excellence

Declaring a vision for "Midwives of Excellence" is just the beginning—transforming that vision into a thriving community of excellence is our mission in action. What you'll discover in the pages ahead is only a glimpse of what's possible. Our dedicated community is actively transforming the landscape of childbirth, championing change, and saving lives, one birth at a time.



ADVOCATING FOR VETERANS

DARLIEGH WEBB

VP OF FINANCE & OPERATIONS

Navigating federal bureaucracy is never easy, especially with the added hurdles of government shutdowns. Despite these challenges, our VA department is deep in the trenches, appealing the VA's recent decision regarding MCU's full-time status. At the forefront of this effort is Emily Wilds. Emily's leadership and tireless advocacy have been vital in ensuring our VA students' voices are heard and their benefits protected. We appreciate your patience as we continue this important fight.

As we move forward, we remain committed to advocating for fair policies and practices that honor the sacrifices made by our veterans. Thank you for standing with us in this crucial endeavor.

Students who have questions or concerns about the charges on their accounts, their ability to make payments, or the possibility of financial aid should reach out to Student Finances and Financial Aid through the My Student Finances & Financial Aid Form.



ACADEMIC SCHOLARSHIP

STEFANIE PODLOG
MIDWIFERY DEPARTMENT CHAIR

In Fall 2025, MCU closed out the Faculty Scholarship Lunch and Learn Series led by the General Education Department Chair Stefanie Podlog, which focused on scholarship as a vital part of teaching and professional practice. Across 5 sessions, faculty explored Boyer's model of scholarship, practical planning and dissemination strategies, and the many ways midwifery educators are already preserving, applying, and sharing knowledge. The series was hosted and organized by the Midwifery Department Chair, Gina Gerboth, as part of the ongoing Lunch and Learn offerings that support faculty continuing education.

The series not only empowered faculty with innovative strategies for integrating scholarship into their teaching practices but also fostered a culture of intellectual curiosity and professional growth. Thank you to everyone who participated in these sessions and helped ensure MCU continues to improve towards in our mission of being an institution devoted to developing Midwives of Excellence.

ANNUAL CAMPUS SECURITY REPORT

MASHA MESYEF

DIRECTOR OF COMPLIANCE

MCU prioritizes the safety and well-being of its students, employees and visitors whether that's online or in person. The Jeanne Clery Disclosure of Campus Security Policy and Campus Crime Statistics Act, commonly referred to as the Clery Act, requires higher education institutions to collect, report and disseminate crime data to the campus community and U.S. Department of Education; to provide timely warnings of reported crimes that represent a threat to the safety of students or employees; and to make public their campus security policies. In compliance with this legislation, MCU's Title IX Coordinator, has gathered information on current crime statistics and other public safety related policies and information at MCU. Please carefully read and utilize this information to help make MCU a safe place for you and others.

This report is also accessible online by visiting [MCU's Consumer Information Page](#). If you have any questions about this report or would like a physical copy mailed to you, please do not hesitate to reach out to cmpliance@midwifery.edu.



APPLICATIONS & ADMISSIONS

JASMINE BARNES
ADMISSIONS DIRECTOR

We're excited to share a few updates from the Admissions team! This term, we successfully supported coverage for one of our staff members during her maternity leave and are thrilled to welcome her back. Our department has also been focused on improving the student experience by introducing Populi earlier in the admissions process. By moving enrollment forms and requirements from Google Forms into Populi Forms, students can become familiar with the platform before they officially enroll, while also increasing efficiency and streamlining workflows within our team.

As application season continues, our top tip for prospective students is simple: be your authentic self and let that shine through in your application essays. Once accepted, success comes from strong communication, so ask questions, keep a close eye on deadlines, and check your email often. We're here to support students every step of the way and look forward to a smooth and successful enrollment season.

Program information and applications are available at <https://www.midwifery.edu/application-process-and-faq/>

STAFF & FACULTY

CHANGES AND UPDATES



As MCU continues to grow and evolve, so too does our Staff and Faculty. We are excited to share the latest updates on our team members and the significant transitions happening within our organization. The following page provides a glimpse into the dynamic shifts and new additions to our workforce that occurred between May 1st and August 31st, 2025.

**CHECK OUR WEBSITE FOR
THE MOST RECENT INFO**



[ORG CHART](#)

[STAFF & FACULTY LISTING](#)

Warmest Welcomes to...



Christina Trautman
Adjunct Faculty, PHYT 2020

Christina, founder of The Pelvic Floor Place, is a highly specialized Pelvic Rehabilitation Practitioner with over 15 years of experience. She holds a Doctorate in Physical Therapy from Pacific University and a B.S. in Life Science from the University of Portland. Driven by personal experience and extensive clinical training, she has become one of the region's premier specialists in women's and pediatric pelvic health. We are excited to have Christina join our faculty and know that her expertise will be a benefit to all MCU students.

Fondest Farewells to...



Gavin Brown
Director of Campus Life
& Alumni Engagement



Kelly Dean
Adjunct Faculty,
PHYT 2020



Marissa Evarts
Teaching Assistant &
Testing Coordinator



Kristi Ridd-Young
Director of Public Affairs

Each of these people has left a mark on the culture and spirit of MCU that will be felt for years to come. Thank you for working to develop the next generation of Midwives of Excellence. Your presence and passion will be missed.

thank you!

Transitions Within MCU



Erin Davis appointed Vice President of Student Affairs

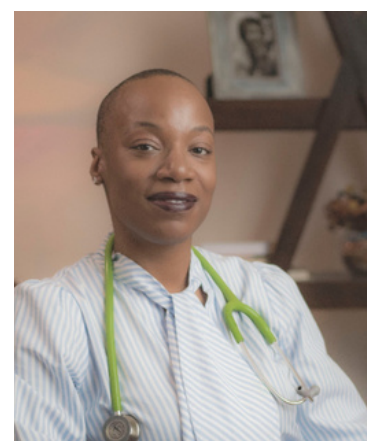
We are delighted to share that Erin Davis has been appointed as MCU's new Vice President of Student Affairs, focusing on student retention and completion. Erin has been a strong student advocate in her role as Director of Student Services and Advising. Her leadership and passion for student success continue to shine, and we are confident she will bring even more strength to this vital area.



Jean Hiefner
Testing Coordinator
(Temporary)



Jenny Schultz
Adjunct Faculty,
New - MDWF 2035



Barbara Verneus
No longer a House
Mentor, Still Adj. Faculty

Midwives of Technical Expertise

Our community is actively engaged in transformative practices that challenge the status quo in pregnancy care. We are committed to enhancing the skills and knowledge of midwives, ensuring they are equipped to provide the highest standard of care. Take a look at some of the ways we are doing this at MCU and for the wider community.

Master of Science in Midwifery Graduate

In September, Audra Post graduated with her Master of Science in Midwifery (MSM). Audra is a beloved faculty member of MCU and we are absolutely delighted to be able to celebrate this long worked for and well-earned achievement with her. Audra's thesis was titled "Collaboration towards Metrics of Participatory Grantmaking Success for Reproductive Justice Initiatives". The research investigated how traditional philanthropy's rigid metrics perpetuate reproductive health inequities. By surveying the Reproductive Justice community, the study identified Participatory Grantmaking (PGM) as a vital power-sharing tool. Findings suggest that success requires shifting toward unrestricted funding, qualitative measures, and extended community collaboration to support culturally aligned midwifery and systemic equity. We are excited to see how this research will be leveraged to expand access and equity in midwifery care.

Peer Mentor Class

In the Winter 2026 term a MCU MSM candidate will launch a 15-week Peer-to-Peer Mentorship Program (SOSC 1090/3090) for Bachelor's students. This master's thesis project is designed to strengthen our midwifery community; helping students carry as they climb. Sarah, an MCU BSM alum, House Mentor, adjunct faculty member, and current MSM student, built the program around the core belief that we rise by lifting others. The program will focus on connection, growth, and support between student midwives and hopes to drive a wider change in midwifery that will support midwife sustainability and accessibility. We are excited about the potential of this experience to help our students feel more connected and confident as they move through their studies at MCU.



MSM Candidate Meets Graduate Program Milestone

Graduate student Pamela Roper has successfully concluded her prospectus, marking an important milestone in the Master of Science in Midwifery program. The prospectus process reflects sustained scholarly work, committee engagement, and ethical review, and it establishes the foundation for the thesis phase of MCU's graduate study. Pamela's research aims to explore motivations for people choosing freebirth in the Inland Northwest, contributing meaningful qualitative insight into decision-making, values, and experiences that inform midwifery education, research, and ethical care practices. We congratulate Pamela on reaching this stage and look forward to seeing the research progress as the thesis moves forward.

Board President, House Mentor, and Adjunct Faculty Member, Cheryl Furer, taught a Homeopathy for Birth Professionals masterclass in October. In the class, participants gained a clear understanding of homeopathy's principles, learned how to select appropriate remedies for common scenarios, and explored ways to integrate homeopathy into evidence-based, holistic practice. Cheryl teaches several classes on Homeopathy at MCU and her classes are always among student's favorites. We admire her commitment to continuing to educate birth professionals of all disciplines.

DANCING FOR BIRTH™ PRESENTS
**HOMEOPATHY FOR
 BIRTH PROFESSIONALS
 MASTERCLASS**



HOST:
STEPHANIE LARSON
 Founder of
Dancing For Birth™

EXPERT:
CHERYL FURER
 Midwife and
Educator

October 21st, 10am MST

MCU's Academic Department Chair, Gina Gerboth, played a key role in the development of a public health initiative to improve newborn screening rates through the implementation of shared decision-making tools. Created in collaboration with the Center for Public Health Innovation and several state organizations, this initiative utilized the Ottawa Personal Decision Guide framework to create professional resources, including a MEAC-accredited continuing education course titled "Shared Decision Making and Newborn Screening". These tools, which include non-state-specific guides and clinical "did you know" resources, are designed to ensure families can make value-aligned decisions regarding their newborn's health. A free, one-hour MEAC certified CEU course is available at <https://www.youtube.com/watch?v=iU7WRymCwbo>

Shared Decision Making: Helping Families Determine If Newborn Screening Is Right For Them



CB&W COLORADO BIRTH & WELLNESS



Midwives of Professional Excellence

The MCU community is a dynamic network of individuals who are passionate about transforming the landscape of pregnancy care. They are innovating practices, advocating for better health policies, and providing compassionate care that places the needs of birthing people and infants at the forefront. They are not just midwives; they are leaders in their field, shaping the future of birth practices and improving outcomes for families. These next pages celebrate the achievements of our community.

Department Feature

Admissions Department

The Admissions Department serves as the vital gateway to MCU. By bridging the gap between aspiring students and their professional goals, the department fosters an educational environment rooted in equity, advocacy, and holistic care. This mission is driven by a diverse team of experts who bring unique perspectives to the student journey. Together, they ensure that every student entering the program is supported by a foundation of institutional equity, rigorous scholarship, and a shared passion for advancing the field of midwifery.



Members

Jasmine Barnes

Louisa Cohen

Melady Elifritz



EST. 1980
**MIDWIVES COLLEGE
OF UTAH**
MIDWIFING MIDWIVES

MCU provides an educational structure and an integrated learning environment for individuals to become midwives of technical expertise, professional excellence, and personal greatness—namely Midwives of Excellence

Jasmine Barnes

Admissions Director

By day, she serves as a school counselor, and by evening, an admissions counselor, driven by a deep passion for learning, advocacy, and helping others reach their goals. Jasmine's journey into midwifery began through her work as a doula after learning about the disproportionate maternal mortality rates affecting Black pregnant people in the U.S., which solidified her commitment to reproductive justice and community care. Outside of work, Jasmine stays active with the help of her two dogs, a love for nature, and a competitive streak that fuels her passion for sports. She enjoys learning new hobbies and continuously challenging herself. At the heart of everything she does is a desire to support people in discovering their passions and achieving their fullest potential—something she is grateful to do every day in both of her professional roles.



Fun Fact: I have an extensive earring collection, with an entire wall dedicated to hanging earrings. Beaded earrings are my favorite, and I've collected many from Indigenous artists, especially during my time working with Changing Woman Initiative. It's so unusual to see me without earrings that my students often express concern when I'm not wearing them.

My passion for midwifery grew through my work as a doula, where I witnessed both the power of birth and the deep inequities within maternity care. I found MCU after working closely with the midwives of Changing Woman Initiative, where I learned the heart, history, and responsibility of the profession. That experience sparked a desire to help move midwifery forward and be part of getting more midwives into the world, especially those grounded in community, culture, and justice. Once I started at MCU, it quickly became clear that this was a workplace like no other. I am continuously learning and growing, both professionally and personally, and I value being surrounded by such a diverse community of people, perspectives, and lived experiences. MCU challenges me, inspires me, and affirms my commitment to Improvement everyday.

Louisa Cohen

Admissions Counselor

Louisa grew up on the beach in Southern California and attended college in another beach town north of Los Angeles. Her extensive background spans all levels of learning, from kindergarten to adult education, and includes teaching and administrative roles in California, Nevada, and Barcelona, Spain. Over the years, she has served as a teacher, program coordinator, workshop facilitator, advisor, counselor, and Registrar, while also supporting international students both in the U.S. and abroad. For her, supporting students as they achieve their educational and professional goals is both an honor and a privilege. Currently, Louisa lives in Henderson, Nevada, with her husband and two boys. Her personal interests include cooking, knitting, reading, attending live music and sporting events, and spending time with her friends and family.



Fun Fact: I grew up in Surf City and spent one summer at the beach every single day, but never learned how to surf. Maybe next year!

I had both of my kids at home, each with a different midwife and student midwife, and was so glad for that experience. The care I received from my midwives and student midwives was exceptional, and was so different from what I was experiencing in the medical model of care. While I am not a midwife or birth worker, I am honored to play a small but crucial role in midwifing midwives through MCU.

Melady Elifritz

Admissions Counselor

Melady holds a BA in Philosophy and Gender & Women's Studies, along with an MA in Philosophy. Currently pursuing her PhD, her research explores the social and political status of pregnant people and the complex ways gender, sexuality, and race intersect with social reproduction. Her academic work is deeply informed by her background as a full-spectrum doula and a steadfast commitment to the principles of reproductive justice.

Beyond her dissertation, she focuses on writing pedagogy, student engagement, and institutional equity, particularly as these areas relate to advancing the field of midwifery. In addition to her role in the Admissions Department, Melady serves as an Adjunct Faculty member and the Writing Lab Coordinator for MCU. She remains dedicated to fostering inclusive educational environments and supporting students in their academic and professional growth.



Fun Fact: My current unusual hobby is loom weaving. I just recently took my first full length scarf off the loom!

As an educator, I am committed to student engagement, learning, and professional development. As a researcher, I am committed to pregnant people's social and political advocacy through antiracist and decolonial theory. These two facets are central to my role within the intellectual community of birth workers and academics alike. I see my work at MCU as an extension of my greater work as a social reproduction theorist and an advocate for reproductive justice.

THE HISTORIC JAMAA BIRTH VILLAGE™
CULTURAL HERITAGE CENTER

*Celebrating Jamaa Birth Village's
Founder-Okunsola M. Amadou*



10-Years of Service

MCU alumna Okunsola M. Amadou is stepping down as the leader of the historic Jamaa Birth Village Cultural Heritage Center in Ferguson, Missouri. Amadou founded the center in 2015, and she will continue her work as board president following her retirement.

Throughout her decade of service, Okunsola has been instrumental in helping and creating midwives by centering African Indigenous practices and community-led care. Her visionary leadership has built a foundation in Ferguson and beyond where the next generation of birth workers can thrive and lead. We are so proud of you, Okunsola, for your unwavering commitment to this sacred work and for the profound impact you continue to have on the future of midwifery!

In August, MCU alumna Amariee Collins (MPA, BS, BSM, AAS) became a licensed midwife in the Commonwealth of Virginia.

Join us in recognizing Amariee's hard work and dedication!

Commonwealth of Virginia



Board of Medicine

Department of Health Professions

This is to certify that

Amariee S. Collins

*has fulfilled the requirements of the Code of Virginia and the regulations of
this board and is hereby authorized to practice as a*

Licensed Midwife

in the Commonwealth of Virginia

Number 0109000226

Issued 08/26/2025

[Signature]
Walter L. Hupp, MD
Chairman
[Signature]
Dana M. Blanton
Secretary



MCU alumna Angie Eventide Hotz recently obtained a new space to operate Mothership Birth Center in Oak Harbor, Washington.



MCU alumna SciHonor Devotion has announced the launch of the Global STEM Birthways – Teen Midwifery Lab™, debuting this spring in Philadelphia.

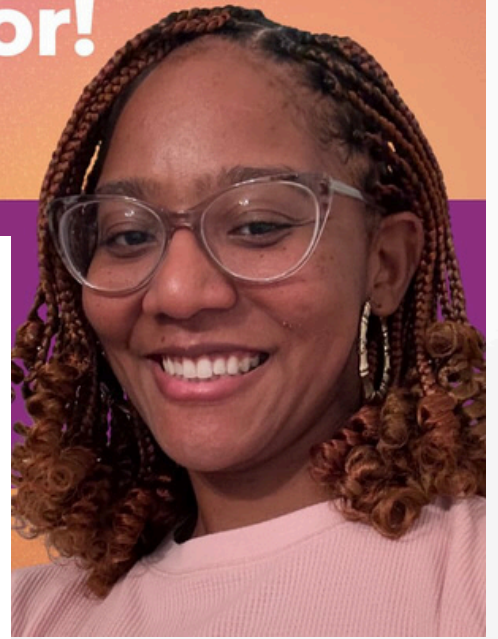
This innovative pilot program invites teens to explore the sacred science of birth through a culturally rooted STEM lens.

We are inspired by this visionary work and look forward to the generational impact of the Teen Midwifery Lab!







Welcome BCE's New Network Engagement Director!



MCU faculty member Carmen Mojica was recently named Network Engagement Director at Birth Center Equity. The organization works to grow and sustain birth centers led by Black, Indigenous, and people of color.

Carmen's leadership will help strengthen the infrastructure for birth centers nationwide and amplify the impact of culturally rooted care. Congratulations on this incredible achievement, Carmen—we can't wait to see the transformative work you will continue to lead in this new role!




MOON BIRTH SUMMIT

THE POWER OF PRESENCE: THE ROLE OF INVOLVED HUSBANDS IN LABOR AND BIRTH

Speaker

ALFIYA KHADEER

Birth Doula, Childbirth
Educator, VBAC
Advanced Doula,
Lactation Counselor,
Body Ready Method Pro,
Pre & Postnatal Fitness
Specialist



In September, the Moon Birth Summit (presented by AMANI Birth Online) featured an impactful session with Alfiya Khadeer. During her presentation, “The Power of Presence: The Role of Involved Husbands in Labor and Birth,” Alfiya delivered a deep dive into the transformative impact of partner support, followed by a dynamic live Q&A session.

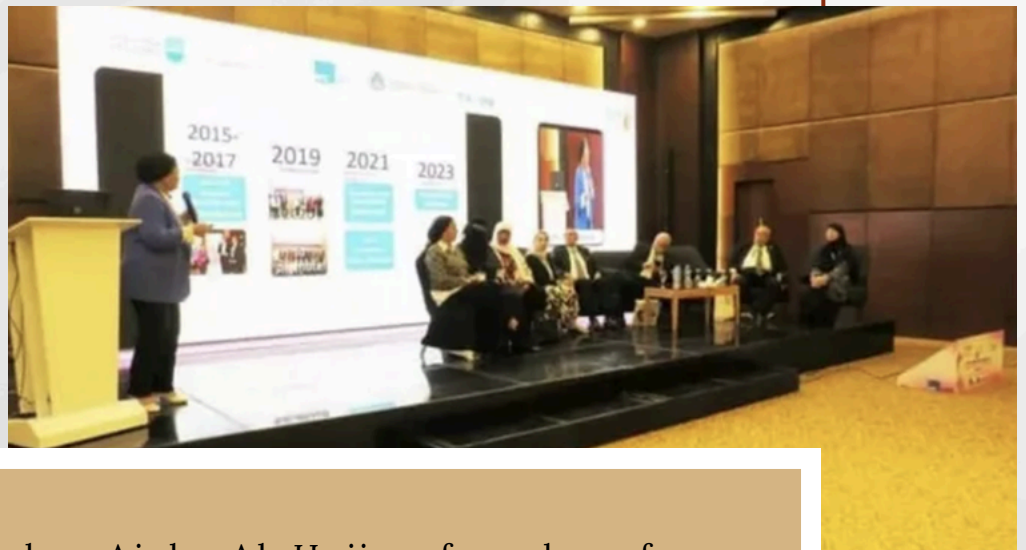
AMANI Birth was founded by Aisha Al-Hajjar, a faculty member at MCU, and continues to lead the way in global birth education.

VITAL
Women
2025



Jenna Gallegos,
LM, CPM, BSM

MCU alumna Jenna Gallegos served as a panelist at Vital Women 2025 at the Claremont Colleges library in Claremont, California. The conference focused on women's health and midwifery in the Inland Empire region of southern California.



MCU faculty member Aisha Al-Hajjar, founder of AMANI Birth, recently joined global experts at the 39th International Conference on Obstetrics and Gynecology in Egypt. This gathering provided a platform to discuss the future of midwifery and maternal health on a global scale.

Aisha's work continues to revive a model of care that centers women, honors faith, and uplifts families. By bridging clinical expertise with compassionate advocacy, she is helping to build healthier birth experiences for mothers everywhere.



The logo for DONA 2025 International Summit Seattle. It features a stylized heart shape composed of white dots on the left. To its right, the text 'DONA 2025' is written in large, bold letters, with 'DONA' in white and '2025' in orange. Below this, the word 'INTERNATIONAL' is written in white, and 'Summit Seattle' is written in a light blue script font.

Dr. Stefanie Podlog, MCU Graduate Dean, General Education Department Chair & Adjunct Faculty Member, presented at the DONA 2025 International Summit Seattle.

The workshop focused on using artificial intelligence technology to enhance lesson planning and client communication while maintaining a steadfast commitment to ethics, equity and human-centered care. By aligning these modern tools with core DONA values, Dr. Podlog is helping doulas and trainers explore how innovation can support their vital work without losing the essential human touch.

We are so proud of your leadership in this emerging field, Dr. Podlog—thank you for ensuring the future of birthwork remains both innovative and rooted in our shared values!



We are so pleased to recognize MCU Adjunct Faculty Member Barbara Verneus for her dedication to professional excellence and her recent journey as a mentee in the Midwifery Mentorship Program, Cohort 5!

Joining 12 other incredible midwives from across the globe, Barbara stepped into this chapter to redefine the midwifery craft and invest deeply in her growth. Barbara continues to embody the belief that a true midwife never stops learning.

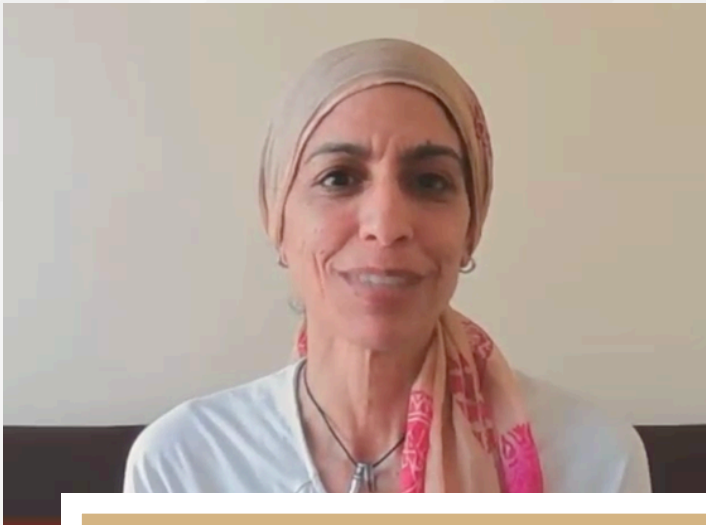
We honor her commitment to being a vital asset to the midwifery community, both locally and globally. Her drive to master her craft and support others on this path is truly inspiring!

Pamela Roper, MCU alumna and community midwife, spoke to the Bonners Ferry Herald about the profound and timeless intersections of holiday tradition and maternal strength.

The feature story highlighted the unique dedication required of midwives who remain on-call through the most sacred times of the year, ensuring that every family receives continuous, heart-centered care. By sharing her experiences, Pamela illustrated how the steady support of a midwife creates a sanctuary for birth, even amidst the bustle of the Christmas season.

[Click here to read the full story.](#)





MCU alumna Romy Sharieff, licensed midwife and founding contributor of the Bryan J. Westfield Scholarship, is advancing midwifery where it's needed most—both locally and globally.

Romy recently returned from Afghanistan, where she volunteered with an NGO to support education and training in physiological breech birth—an area of practice that can be critical in low-resource and high-risk settings. Her work reflects a deep commitment to expanding safe, evidence-based care in communities where access to skilled support can be limited.

An article sharing insights from this experience is expected to be published in March 2026, contributing to the growing body of knowledge that strengthens midwifery practice worldwide. We are proud to see MCU graduates like Romy leading with skill, courage, and purpose—extending the reach of midwifery across borders and into communities that need it most.



MCU Alumna Okunsola M. Amadou celebrated a major milestone with the opening of the African Indigenous Midwifery Museum and also the African Indigenous Midwifery Library Research Institute at the Jamaa Birth Village Cultural Heritage Center in Ferguson, Missouri

These spaces are designed to preserve and celebrate the rich history of Black midwifery and ancestral birth traditions, providing a vital educational resource for the community and birth professionals alike.

Okunsola's dedication to blending clinical excellence with cultural preservation ensures that the future of birth work remains rooted in honor, history and healing. By creating a dedicated space for learning and reflection, she continues to lead the way in redefining maternal health through a lens of equity and heritage.



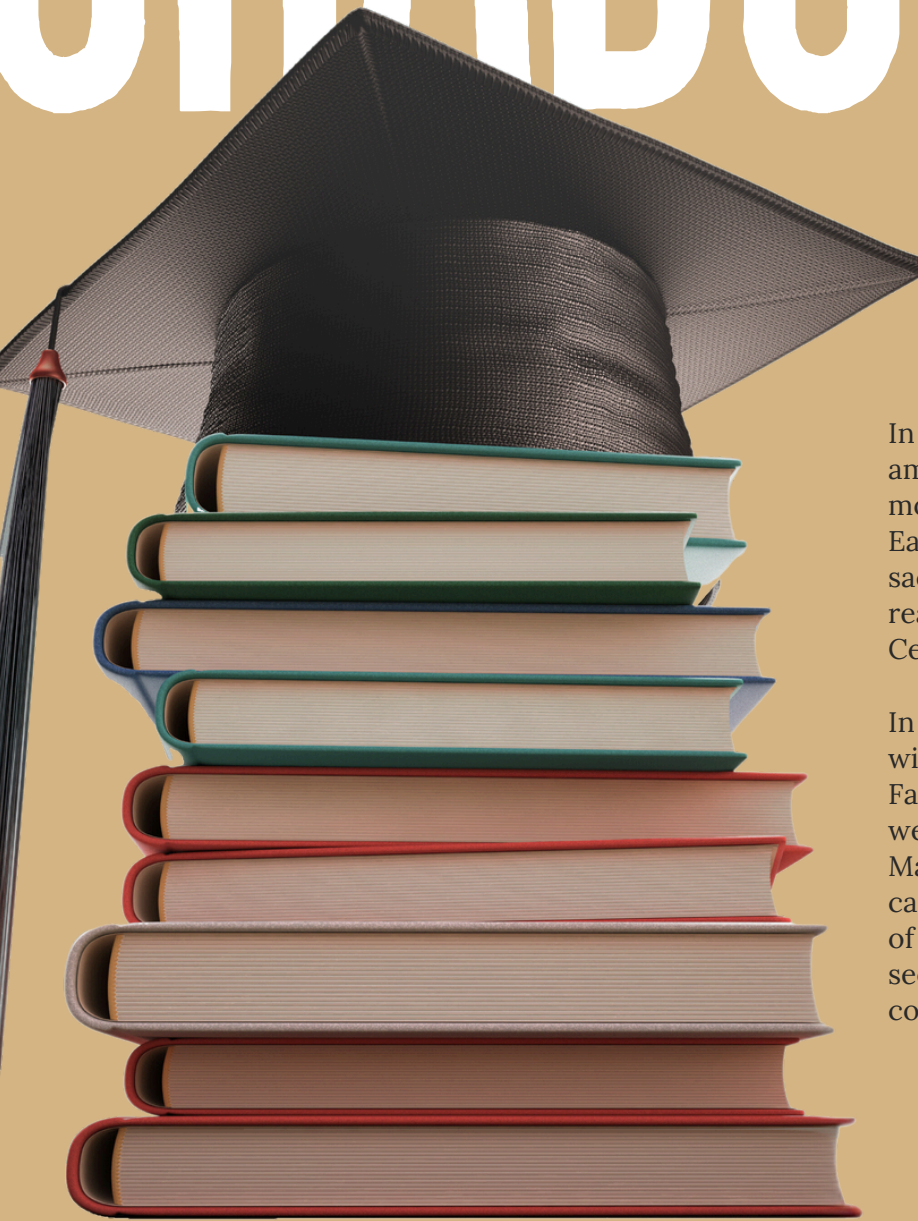
In September, MCU Faculty Member Ruth Ann Colby Martin was a featured guest on the podcast *Dancing in the Discomfort Zone*. Drawing from her unique background as a survivalist, professor, and midwife, Ruth Ann shared a practical framework for navigating the stressors of modern life.

The episode explored how a year in the wild can be translated into "smart survival moves" for use at work and at home. By applying core principles—shelter, water, fire, and food—to our daily environments, Ruth Ann demonstrated how to protect personal energy and maintain focus. Her discussion on intentional practices, such as journaling and "15-minute sit-spots," provided actionable strategies for finding flow, feeding one's passion, and living with purpose.

We are pleased to see our faculty sharing such grounded, versatile expertise that helps others build resilience and joy in their professional and personal lives. [Visit this link to access the podcast episode.](#)

IN CHRONOLOGICAL ORDER OF APPLICATION SUBMISSION DATE

GRADUATES



In the Fall 2025 term, we saw so many amazing student midwives graduate and move into the next phase of their journey. Each of these midwives made incredible sacrifices and gave their all towards reaching their dream of becoming a Certified Professional Midwife.

In total, we had nine students graduate with a Bachelor of Science in Midwifery this Fall. In addition to these nine BSM students, we also had the privilege of granting a Master of Science in Midwifery to one candidate. We are excited to highlight each of these midwives and look forward to seeing the impact they have in their communities as Midwives of Excellence.



Master of Science in Midwifery

**Audra
Post**

**Retired CPM
Sept 2025**



Bachelor of Science in Midwifery

**Katherine
Brambilia**

**Washington
Idaho
Sept 2025**



Bachelor of Science in Midwifery

**Alena
Fontaine**

**New Jersey
Deleware
Pennsylvania
Oct 2025**



Bachelor of Science in Midwifery

**Michaela
Bell**

California
Oct 2025



Bachelor of Science in Midwifery

**Jennifer
Jeong**

**Canada
Philippines
Oct 2025**



Bachelor of Science in Midwifery

**Naomi
Voss**

**Virginia
Nov 2025**



Bachelor of Science in Midwifery

**Christina
Harrell**

Texas
Nov 2025



Bachelor of Science in Midwifery

**Alissa
Crandall**

S. Dakota
Nov 2025



Bachelor of Science in Midwifery

**Michelle
Moncrief**

**Hawaii
Dec 2025**

Midwives of Personal Greatness

We are dedicated to midwifing midwives. In the true spirit of midwifery care, we believe this means caring for the whole individual and encouraging growth and development in all areas of life. So while we want to recognize and celebrate professional achievements, we also hold space for moments of personal growth, success, and rest.

Annual Goal: \$12,000+

Briana Blackwelder Equal Access Scholarship Fund



Providing tuition relief for midwives serving medically underserved communities

YOU can play a role in developing
Midwives of Excellence.

YOU can save lives one birth at a time.

YOU can make a difference.

MAKE YOUR GIFT TODAY AT
midwifery.edu/donate

MCU IN REVIEW IS FOR YOU!

Share your stories, your updates, and your ideas with marketing@midwifery.edu to include in the next edition of our newsletter. The newsletter is designed to inform and inspire our community. Are you a seasoned student or recent grad with thoughts about your experiences? Are you working on a project, internship, or speaking engagement we can pat you on the back for? MCU is interested in what's going on with you. Send your updates to marketing@midwifery.edu or use this form:

<https://forms.gle/gc8KjF293rnkrMt89>



EST. 1980

**MIDWIVES COLLEGE
OF UTAH**

M I D W I F I N G M I D W I V E S